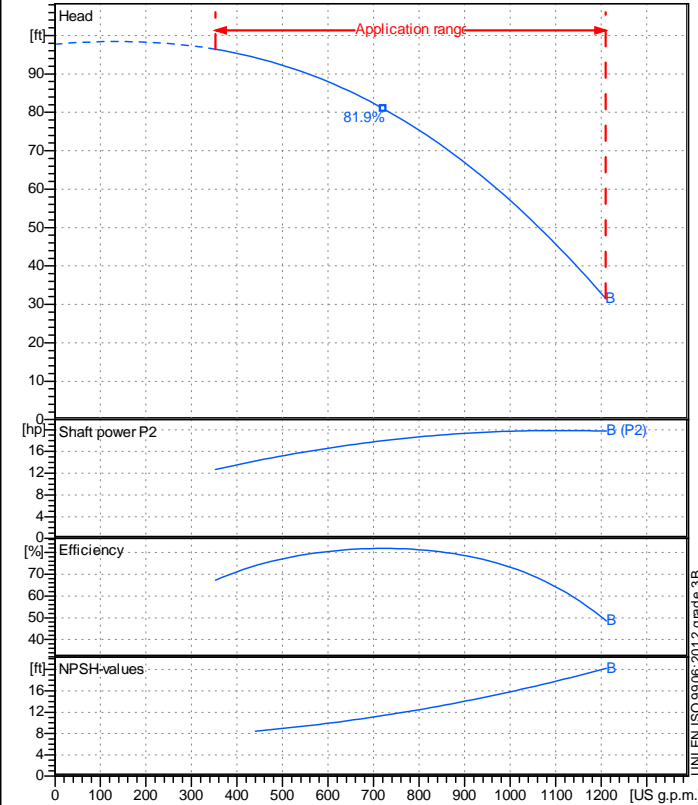


Receiver

From

 Company name
 Respons. Department
 Person in charge
 Phone number
 Fax no
 E-mail address


Operating data specification

Nominal flow	US g.p.m. 0
Nominal head	ft 0
Static head	ft 0
NPSH - v value of plant	ft 0
Inlet pressure	psi 1.42
Fluid	Water, pure
Operating temperature t A	°F 68
Density at t A	lb/ft³ 62.32
Kin. viscosity at t A	ft²/s 1.082E-5

Pump

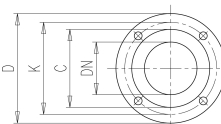
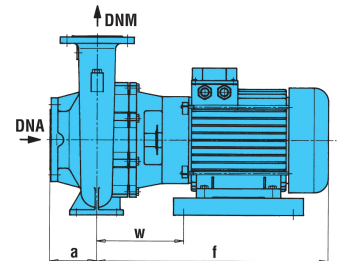
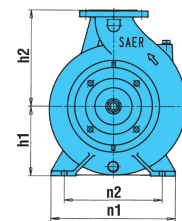
Pump name		6GM4-4P 100-250B	
Size		100/80/200	
Design			
Speed rpm	1800	No of stages	1
Impeller type			
Flow	Nominal	US g.p.m.	
	Max-	US g.p.m. 1210	
	Min-	US g.p.m. 352	
Head	Nominal	ft	
	Max-	ft 96.4	
	Min-	ft 31.5	
Head H(Q=0)		ft 97.8	
NPSH 3%		ft	
Max. working pressure		psi 42.3	
Shaft power		hp	
Efficiency		%	
Max absorbed power		hp 19.859	

Materials Pump

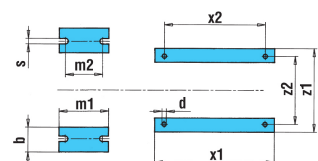
Shaft	Stainless steel AISI 431 (1.4057)
Impeller	Cast iron EN-GJL-250
Pump body	Cast iron EN-GJL-250
Seal disc	Cast iron EN-GJL-250
Gasket	Natural fiber
Mechanical seal	BVEG (Grafito/Ossido Allumina/EPDM)

Dimensions in inch

a	5 1/2	z1	12 5/8
b	3 1/8	z2	10 1/16
d	9/16		
DNA	4 15/16		
DNM	3 15/16		
f	27 1/8		
h1	8 7/8		
h2	11		
m1	6 5/16		
m2	4 3/4		
n1	15 3/4		
n2	12 3/8		
s	1 1/16		
w	7 1/16		
x1	16 1/8		
x2	14 9/16		



C	6 1/4	C	7 3/8
D	8 11/16	D	9 13/16
DN	3 5/16	DN	4 5/16
K	7 1/16	K	8 1/4
n°	5/16	n°	5/16
Øn	3/4	Øn	3/4



Motor		Frame size	160 L	
Manufacturer / Type		SAER	MEC160L-4P-15	
Rated power	hp	20.115	Efficiency 4/4	92 %
Electric current	A	27 A	Speed rpm	1800
Electric voltage	V	460V	3~	Hz 60
Starting mode	Unknown			
Degree of protection	IP 55	Insulation class	F	

Remarks:

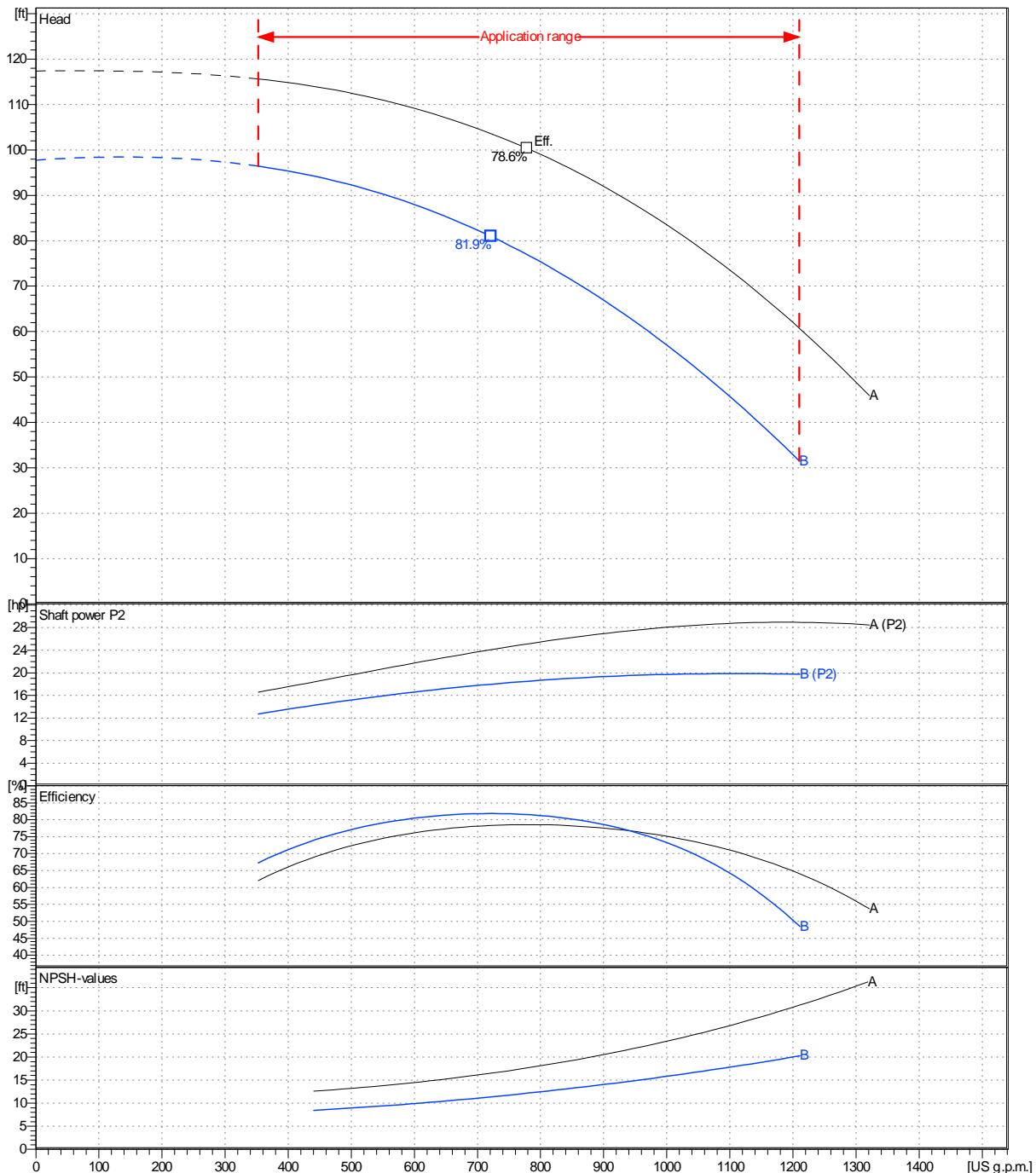
Project	Project ID	Created by	Created on	Last update
			2022-09-26	

Receiver		From	
Company name			
Respons. Department			
Person in charge			
Phone number			
Fax no			
E-mail address			

Operating area	Flow	Head	Impeller type
Operating data specification	0 US g.p.m.	0 ft	Impeller construction Closed
Pump data	US g.p.m.	ft	Sense of rotation Clockwise from the drive end
			Outlet width DN 100
	Flow	Head	Shaft power P2
	Min. Max. η Max.	H(Q=0) η Max.	P2(Q=0) Max. η Max.
	US g.p.m. US g.p.m. US g.p.m.	ft ft	hp hp hp
	352 1210 722	97.8 81	19.9 18
			Speed rpm 1800
			Frequency Hz 60 Hz

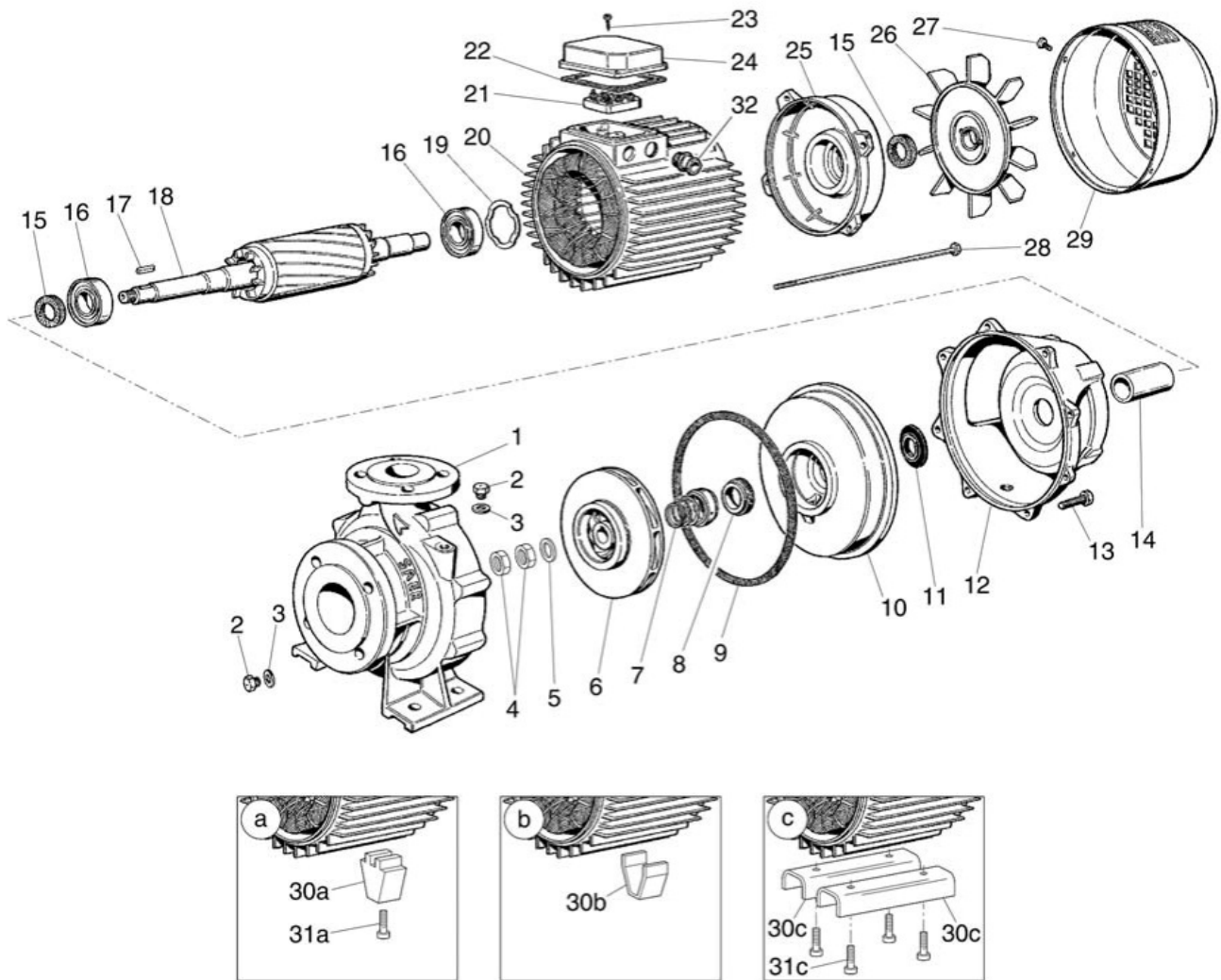
Performance data based to: Water, pure [100%] ; 68°F; 62.3lb/ft³; 1.08E-5ft²/s

UNI EN ISO 9906:2012 - Grade 3B



Project	Project ID	Created by	Created on 2022-09-26	Last update
---------	------------	------------	--------------------------	-------------

Company name
Respons. Department
Person in charge
Phone number
Fax no
E-mail address



Project	Project ID	Created by	Created on 2022-09-26	Last update
---------	------------	------------	---------------------------------	-------------