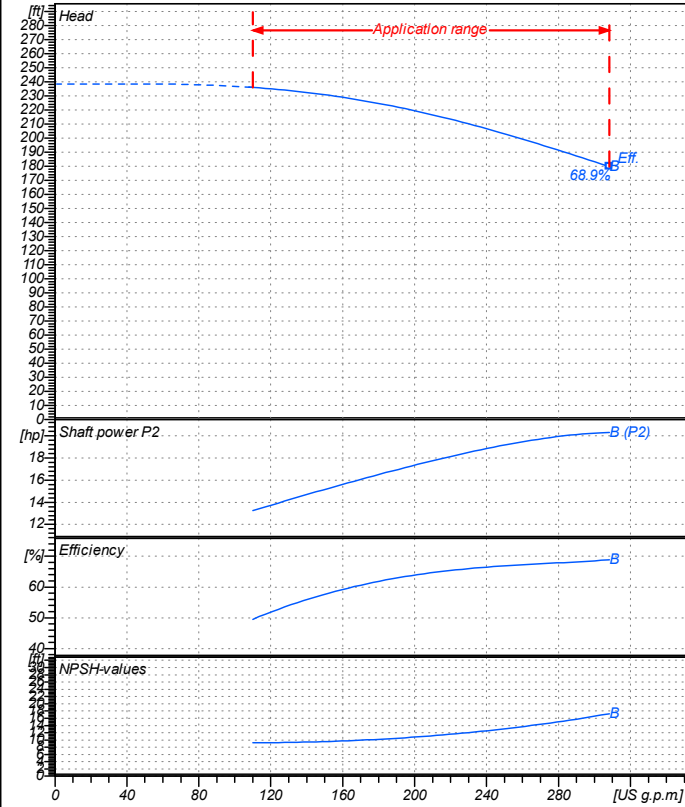


Receiver

From

Company name  
Respons. Department  
Person in charge  
Phone number  
Fax no  
E-mail address



**Operating data specification**

Nominal flow	US g.p.m	0
Nominal head	ft	0
Static head	ft	0
NPSH - value of plant	ft	0
Inlet pressure	psi	1.42
Fluid	Water, pure	
Operating temperature t A	°F	68
Density at t A	lb/ft³	62.32
Kin. viscosity at t A	ft²/s	1.082E-5

**Pump**

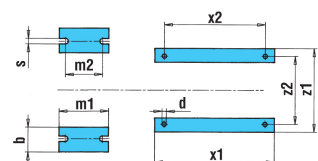
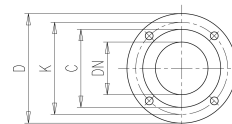
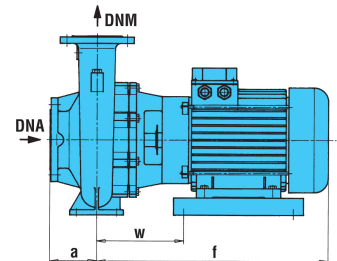
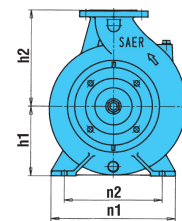
Pump name	6IR50-200B		
Size	65/50/200		
Design			
Speed rpm	3600	No of stages	1
Impeller type			
Flow	Nominal	US g.p.m	
	Max-	US g.p.m	308
	Min-	US g.p.m	110
Head	Nominal	ft	
	Max-	ft	236
	Min-	ft	180
Head H(Q=0)	ft 238		
NPSH 3%	ft		
Max. working pressure	psi 103		
Shaft power	hp		
Efficiency	%		
Max absorbed power	hp 20.307		

**Materials Pump**

Shaft	Stainless steel AISI 431 (1.4057)
Impeller	Cast iron EN-GJL-250
Pump body	Cast iron EN-GJL-250
Seal disc	Cast iron EN-GJL-250
Gasket	Natural fiber
Mechanical seal	BVEG (Grafite/Ossido Allumina/EPDM)

**Dimensions in inch**

- a 4 z1 10<sup>3</sup>/<sub>16</sub>
- b 1<sup>15</sup>/<sub>16</sub> z2 8<sup>1</sup>/<sub>2</sub>
- d 1/2
- DNA 2<sup>9</sup>/<sub>16</sub>
- DNM 1<sup>15</sup>/<sub>16</sub>
- f 20<sup>3</sup>/<sub>4</sub>
- h1 6<sup>3</sup>/<sub>8</sub>
- h2 7<sup>15</sup>/<sub>16</sub>
- m1 3<sup>15</sup>/<sub>16</sub>
- m2 2<sup>3</sup>/<sub>4</sub>
- n1 10<sup>7</sup>/<sub>16</sub>
- n2 8<sup>3</sup>/<sub>8</sub>
- s 9/16
- w 5<sup>7</sup>/<sub>8</sub>
- x1 10<sup>7</sup>/<sub>16</sub>
- x2 8<sup>3</sup>/<sub>8</sub>



<b>Motor</b>	Frame size	132 M		
Manufacturer / Type	SAER	MEC132M-2P-15		
Rated power	hp	20.115	Efficiency 4/4	88 %
Electric current	A	50 A	Speed rpm	3600
Electric voltage	V	230V	3~	Hz 60
Starting mode	Unknown			
Degree of protection	IP 55	Insulation class	F	

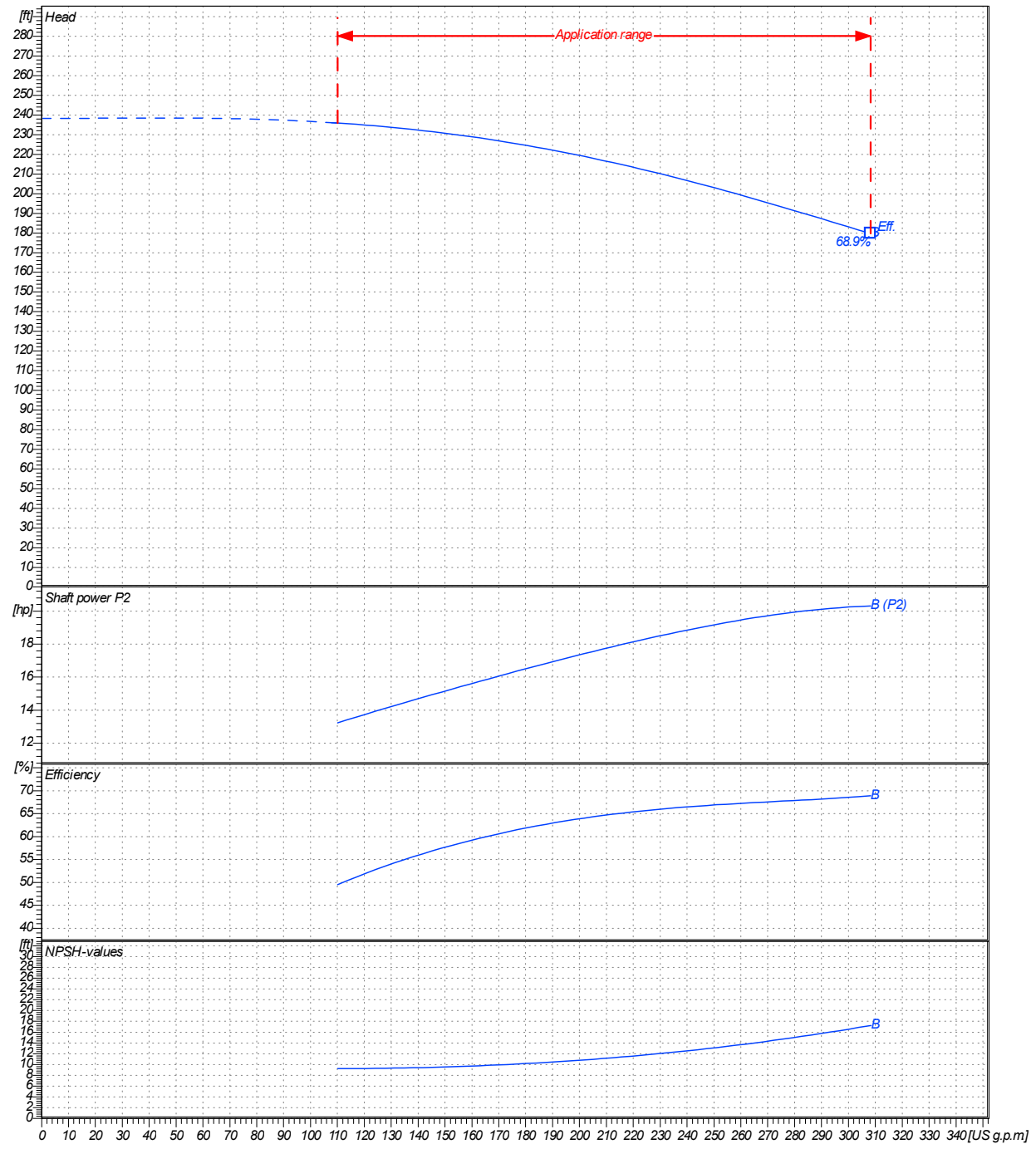
Remarks:

Project	Project ID	Created by	Created on	Last update
			2020/07/16	

<b>Receiver</b>	<b>From</b>
Company name	
Respons. Department	
Person in charge	
Phone number	
Fax no	
E-mail address	

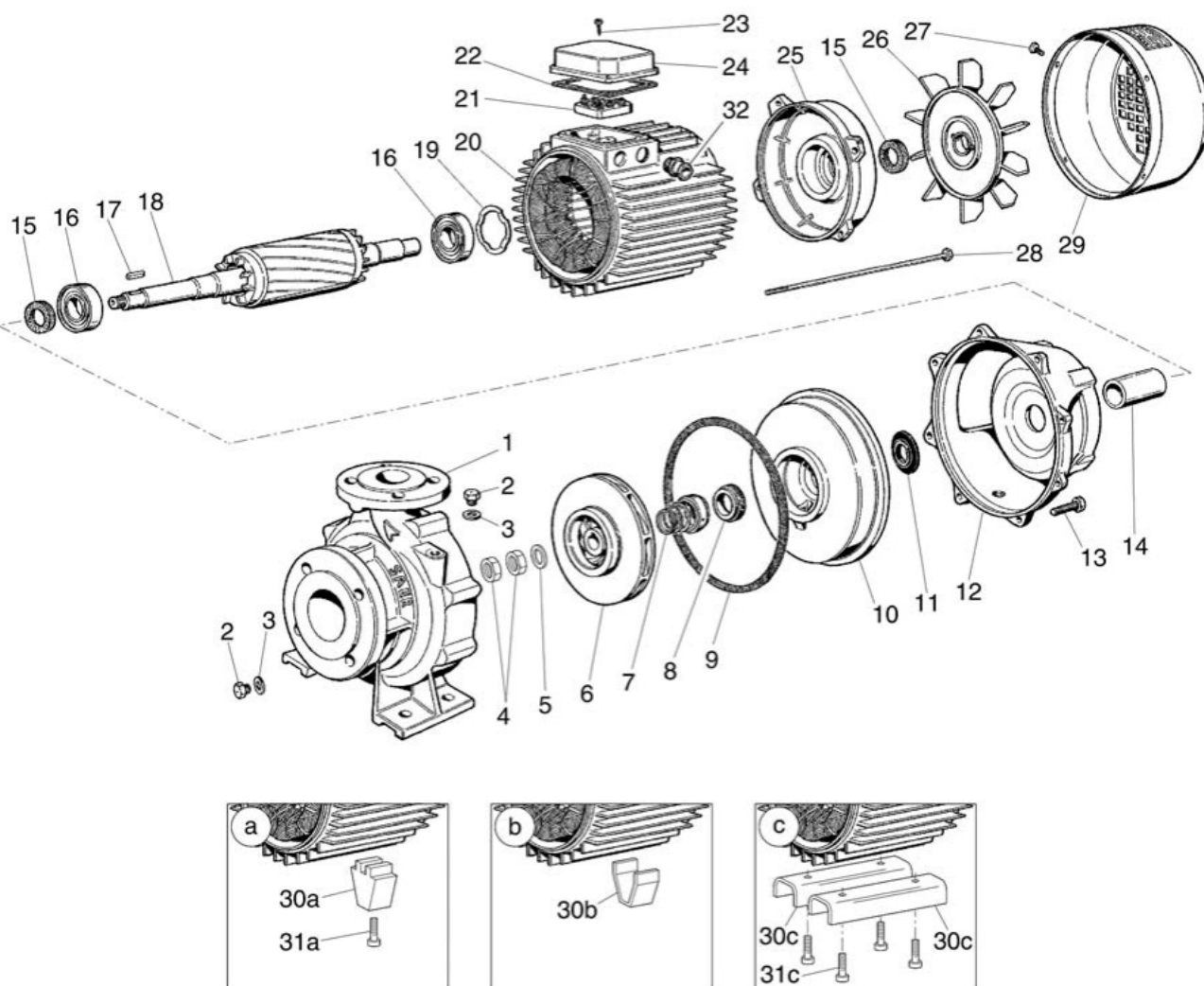
Operating area	Flow	Head	Impeller type
Operating data specification	0 US g.p.m	0 ft	Impeller construction: Closed
Pump data	US g.p.m	ft	Sense of rotation: Clockwise from the drive end
			Outlet width: DN 50
	Shaft power P2		Speed: rpm 3600
	Min. Max. $\eta$ Max.	H(Q=0) $\eta$ Max.	Frequency: Hz 60 Hz
	US g.p.m US g.p.m US g.p.m	ft ft	
	110 308 308	238 180	
		P2(Q=0) Max. $\eta$ Max.	
		hp hp hp	
		20.3 20.3	

Performance data based to: Water, pure [100%]; 68°F; 62.3lb/ft<sup>3</sup>; 1.08E-5ft<sup>2</sup>/s UNI EN ISO 9906:2012 - Grade 3B



Project	Project ID	Created by	Created on	Last update
			2020/07/16	

Company name  
Respons. Department  
Person in charge  
Phone number  
Fax no  
E-mail address



Project

Project ID

Created by

Created on  
2020/07/16

Last update